



Sage Creek Canyon Property Owners

Spring 2024

Happy Spring!

Enclosed, please find your 2024 Fishing Passes. You can easily replace last year's passes in the plastic sleeves previously provided. Should you require new badge holders or plastic sleeves with clips, please don't hesitate to contact Tina Moore on (970) 390-5727.

The Board would like to draw your attention to a recent development concerning our neighbor across the Blue River on the west side, specifically the Blue Star Placer parcel. They have leased their property to a commercial enterprise named Rare Waters. This company grants fishermen access to the river, albeit with a rod fee, from our neighbor's property opposite ours. However, it's important to note that access is only permitted from the west side of the river, not from our SCC POA property.

It's likely that we'll encounter more instances of fishermen utilizing Rare Waters to access the river and enjoy our prior trout stocking efforts. To ensure clarity for all our Property Owners and guests, it's important to distinguish between our POA land and the neighboring property on the west side of the Blue River. This will enable us all to continue enjoying this beautiful and cherished amenity.

For your reference, we've included a plat map to indicate where river access is available within our neighborhood. This serves as a reminder of our POA land boundaries and the areas along the river where fishing and recreation are permitted. (This is a copy from the Summit County GIS website as a close representation and expanded for more detail.)

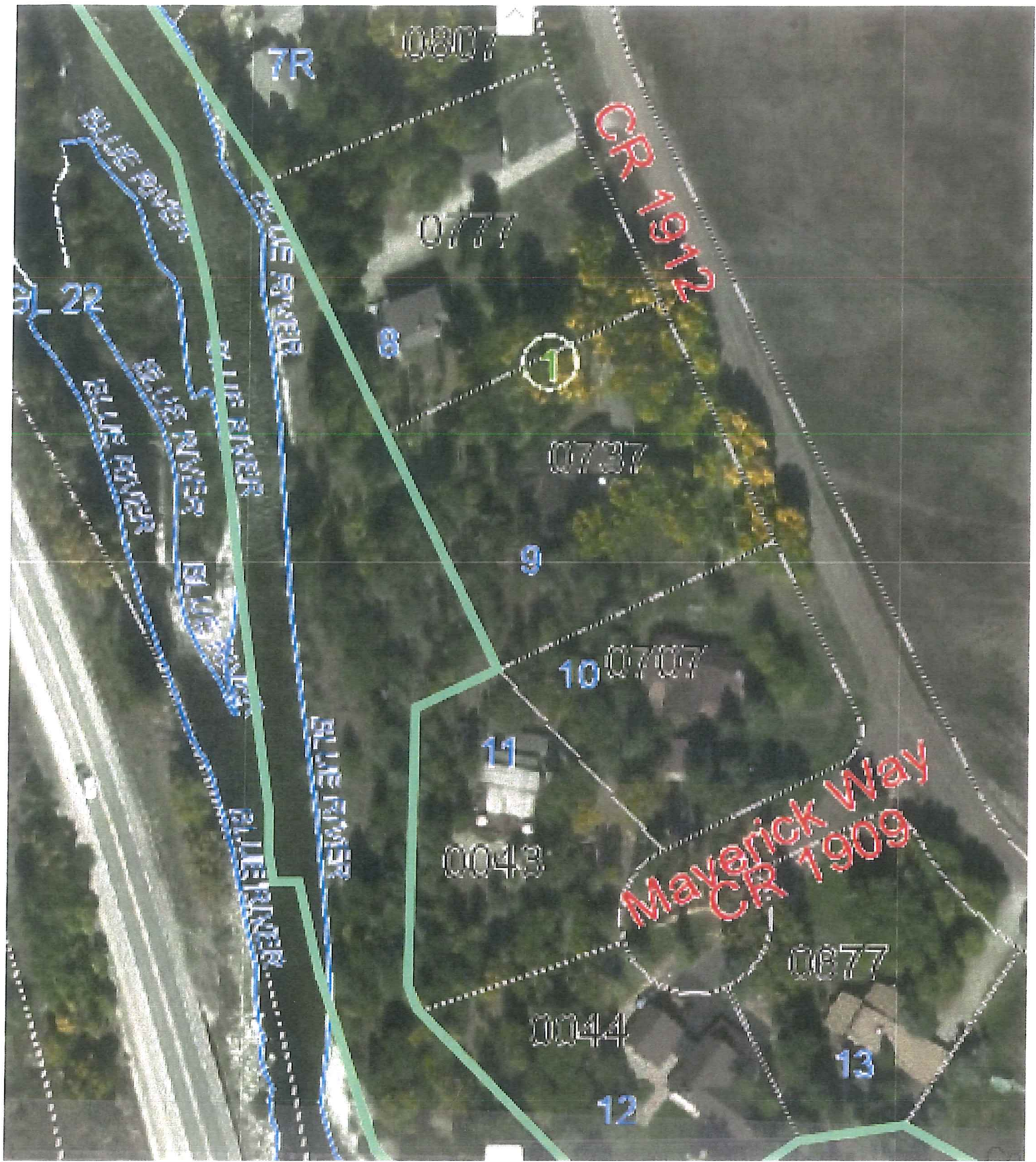
Thank you for your attention to this matter. We appreciate your cooperation in preserving the integrity of our property and ensuring a pleasant experience for all.

Sage Creek Canyon Property Owners Association Board

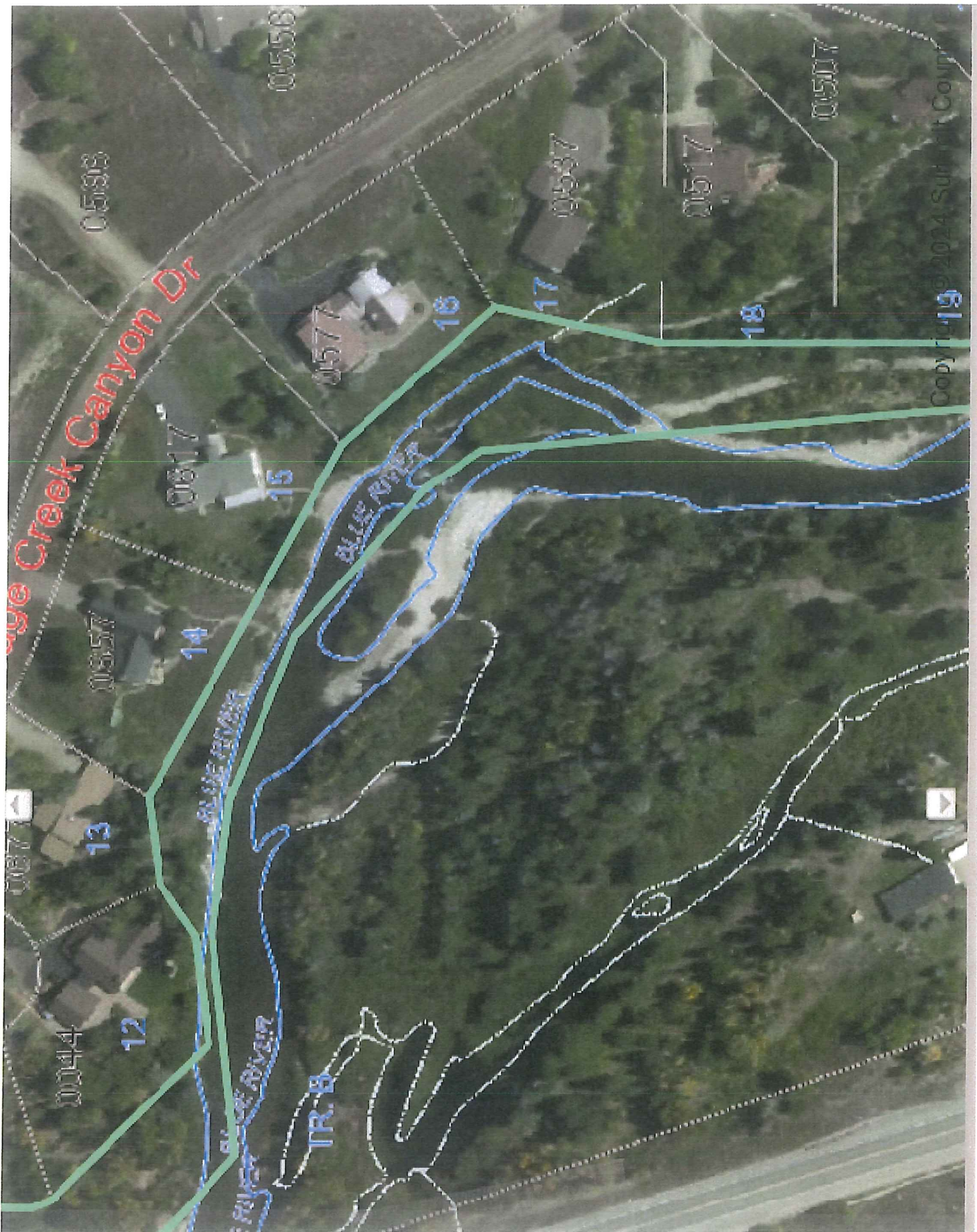
River Access along split-rail fence by mailboxes



SCC POA land highlighted in green



SCC POA land highlighted in green



SCC POA land highlighted in green

River Access at end of circle



SCC POA land highlighted in green